

**A57 Link Roads  
TR 010034  
5.1 Consultation Report  
Appendix C Copy of the Draft 2018 SoCC  
Provided to Local Authorities**

APFP Regulation 5(2)(q)

Planning Act 2008 Infrastructure Planning (Applications: Prescribed  
Forms and Procedure) Regulations 2009

# **Trans Pennine Upgrade Programme: Statement of Community Consultation (SoCC)**

**Document Control**

<b>Document Title</b>	Statement of Community Consultation (SoCC)
<b>Author</b>	Trans Pennine Upgrade Programme Team, Roads Investment Programme
<b>Owner</b>	
<b>Distribution</b>	MP Project Teams
<b>Document Status</b>	Draft

**Revision History**

Version	Date	Description	Author
0.1	24 November 2017	First Draft	
		Second draft	
		Final	
		Update for PCF	

**Reviewer List**

Name	Role

**Approvals**

Name	Signature	Title	Date of Issue	Version

**Statement of Community Consultation (SoCC) template**

Section 47(1) of the Planning Act 2008 states that the promoter of a proposed Development Consent Order (DCO) application must prepare a statement setting out how they propose to consult people living in the vicinity of the land about the proposed application. This template can be used by project teams preparing a SoCC to support an application for a DCO. The wording below is set text for Highways England.

The original format of this document is copyright to Highways England.

---

## Introduction

Highways England is publishing this **Statement of Community Consultation (SoCC)** in connection with a proposed improvement to the Trans-Pennine route between the roundabout at junction 4 of the M67 (which meets the A57 at Mottram) and junction 36 of the M1 in Tankersley. The purpose of this document is to set out how we will consult the local community about the scheme. This document also provides background to the scheme and how the application to build it will progress.

## The Application

Highways England is developing this scheme under the Planning Act 2008 and is publishing this statement under Section 47 of that Act. We have liaised with the local authorities responsible for areas where we intend to build this project, about plans to consult with the local community. These are Tameside Metropolitan Borough Council, Derbyshire County Council and High Peak Borough Council.

The Planning Act 2008 requires Highways England to make an application to the Secretary of State through the Planning Inspectorate for a Development Consent Order (DCO) to build the scheme. The Secretary of State's role is to consider whether authorisation should be given for major infrastructure projects like this scheme. Highways England anticipates that a DCO application for the scheme will be submitted winter 2018/19. The Planning Inspectorate will examine the DCO application and the Secretary of State will decide on whether the scheme should go ahead.

Government policy relating to the development of the national road network is set out in the National Networks National Policy Statement (NNNPS). This provides the framework for DCO applications to be considered against.

When Highways England submits its DCO application, the Secretary of State must consider whether the consultation has been adequate. This pre-application consultation will be important in relation to the examination process that follows after an application is accepted by the Planning Inspectorate. **Therefore, the best time to provide feedback on this scheme is now by taking part in this pre-application statutory consultation.**

You can find more information about the Planning Inspectorate and the Planning Act 2008 on the National Infrastructure Planning website: <http://infrastructure.planninginspectorate.gov.uk> or by calling the Planning Inspectorate on 0303 444 5000.

## The Scheme

The Trans-Pennine Upgrade Programme, which includes the A57, A628, A616 and A61 is the main trunk road route between the Manchester and Sheffield city regions. It mainly consists of single carriageways with steep gradients and sharp bends, and is

---

particularly affected by bad weather. The route is also particularly susceptible to weather-related incidents and, as a key Trans-Pennine crossing route, lacks resilience to support local economic growth. Accident rates on sections of the A628 and A616 are above the national average and are made worse by severe weather conditions. There are also high numbers of pedestrian accidents on the A628 through the urbanised areas of Hollingworth and Tintwistle. Congestion can be particularly severe from where the M67 meets the A57 creating delays and unreliable journey times.

The elements to be developed and delivered in the Trans-Pennine Upgrade Programme are:

- Mottram Moor Link Road – a new dual-carriageway link road from the M67 terminal roundabout to a new junction at A57(T) Mottram Moor and a new single carriageway link from the link road north to A6018 Roe Cross Road
- A57(T) to A57 Link Road – a new single carriageway link from the A57 at Mottram Moor to a new junction on the A57 at Brookfield, bypassing the existing A628 / A57 and A57 Woolley Lane/Woolley Bridge Road junctions
- Safety and Technology Improvements – safety measures focused on addressing accident clusters and providing message signs to allow drivers to make informed decisions.
- Westwood Roundabout - capacity improvement works at the A616 and A61 junction near Tankersley.

Strategic benefits - the scheme will:

- Support economic growth by reducing journey times between Manchester and Sheffield.
- Reduce delays by providing a network better able to deal with increased congestion following collisions and incidents.
- Provide people with more reliable journeys to key locations like Manchester Airport.
- Improve safety.

Local benefits - the scheme will:

- Remove through traffic from some of the existing main roads in Mottram and Hollingworth, which will reduce noise levels and pollution to properties (including residential) for people living nearby.
- Create better conditions for pedestrians and cyclists in Mottram and Hollingworth.
- Reduce congestion and delays affecting residents and businesses in the area.
- Help public transport to be more reliable where it currently gets delayed.
- Reduce congestion and improve traffic flows on the Westwood roundabout so that it is no longer a bottleneck.

---

## Consulting the community

In accordance with section 47 of the Planning Act 2008, Highways England is consulting with residents and businesses in the vicinity of the proposed scheme.

We have already undertaken two public information exhibition events. Public awareness events were held in autumn 2016 and a four week non-statutory period with public consultation events were held in spring 2017. We asked consultees for their views on proposed route options and Option A, their preferred option for improvements to the Mottram link road has become the preferred route. Though not proposed at the time, there were many comments regarding improvements to Westwood Roundabout, and therefore we are taking forward a scheme to improve congestion and traffic flows at the junction. There was broad agreement on which safety measures would be preferred which will influence the eventual plans. We have gained more information on how the scheme will affect local people.

More details, including the outcomes of the spring 2017 consultation, are available to download from [www.highways.gov.uk/trans-pennine-upgrade/](http://www.highways.gov.uk/trans-pennine-upgrade/), on request from Highways England, or to view for the duration of the consultation period at the display locations detailed in this SoCC.

We want to make sure that the local community, residents, local interest groups, businesses, visitors and road users, have the opportunity to fully understand the scheme and comment on our proposals. To do this we will hold a six weeks statutory consultation from 12 February 2018 to 25 March 2018, where we will consult on:

- Proposed route
- Works to the existing A57 road (“de-trunking”)
- Environmental assessments and potential environmental impacts
- Environmental mitigation measures
- Traffic arrangements during the construction of the scheme
- Non-Motorised Users proposals

We have carried out an Environmental Impact Assessment for the scheme. The scheme is an Environmental Impact Assessment development, and therefore we are publishing a Preliminary Environmental Information (PEI) report. The PEI report will be available as part of the consultation materials. This gives information about the potential environmental effects of the scheme and the measures proposed to reduce those effects to assist well-informed responses to the consultation.

1. Our statutory public consultation will involve:

Method	Detail
<p><b>Staffed public information exhibitions</b></p>	<p>Here, you will be able to discuss the scheme. These exhibitions will be held at:</p> <p style="text-align: center;"><b>Saturday 17 February 2018 with VIP preview*</b> Between 11:00-18:00 at Mottram CofE Primary School, Warhill, Mottram, Hyde, SK14 6JL</p> <p style="text-align: center;"><b>Wednesday 28 February 2018</b> Between 14:00 -20:00 at Bradbury Community House Market Street Glossop Derbyshire, SK13 8AR</p> <p style="text-align: center;"><b>Saturday 03 March 2018 (TBC)</b> Between 11:00-17:00 at Tesco, Stockport Rd, Hattersley Hyde, SK14 6QA</p> <p style="text-align: center;"><b>Monday 05 March 2018 with VIP preview*</b> Between 11:00-18:00 at Tankersley Welfare Hall, Pilley Lane, Tankersley Barnsley, S75 3AP</p> <p style="text-align: center;"><b>Friday 09 March 2018</b> Between 11:00-17:00 at St Mary's Church, Market Street, Hollingworth Hyde, SK14 8NE</p> <p style="text-align: center;"><b>Saturday 10 March 2018</b> Between 11:00-17:00 Mottram Community Centre, Church Brow Mottram, Hyde, SK14 6JJ</p> <p>Please note: there are no events during school holidays.</p> <p>The exhibitions will give people an opportunity to view scheme proposals, talk to the project team and provide comments.</p> <p>The public will be informed of the exhibition through various channels including; statutory notices in local and national newspapers, advertisements in appropriate local newspapers, via our website, the media, direct communications and project updates.</p> <p>Public consultation questionnaire response forms will be available at the exhibitions for members of the public to record their comments and these can either be left with the project team and/or sent back separately via the freepost envelopes provided.</p> <p>*VIP previews will be given for the first hour</p>

	of the events in Mottram and Tankersley for statutory consultees to attend by invitation.
<b>Scheme webpage</b>	A full summary of the project, copies of the supporting project documents and a consultation questionnaire response form will be provided on a dedicated website: <a href="http://www.highways.gov.uk/trans-pennine-upgrade/">www.highways.gov.uk/trans-pennine-upgrade/</a> .
<b>Public consultation brochure</b>	A public consultation brochure and details of the planned exhibitions will be delivered to homes and businesses in the consultation zone shown at Appendix 1.
<b>Council and community / area forum briefings</b>	Where appropriate, meetings with local councils will be offered to discuss the proposal. Local Authorities affected by the scheme or neighbouring the scheme are detailed at Appendix 2.
<b>Stakeholder briefings</b>	When invited, and where it is possible to do so, the project team will attend meetings of local community groups affected by the proposal.
<b>Establishing stakeholder groups</b>	Having built a relationship with the local community, we will consider, in consultation with relevant town and parish councils and community / area forums, whether there is benefit in establishing a stakeholder group, to which we would invite local community nominated representatives to discuss our proposals. If a similar stakeholder group is already in existence or established by the relevant local authorities, we will participate when invited.
<b>Scheme updates</b>	Scheme updates will be produced at key milestones, providing details on the proposals and reporting on the outcome of the consultation process respectively. These will be distributed to residents and community groups by e-mail, to road users registering for further communications on our website, and to town councils and community / area forums who wish to receive them. Copies will be made available on the scheme webpage and provided on request by the project team.
<b>Consultation feedback</b>	Written comments can be made either online at <a href="http://www.highways.gov.uk/trans-pennine-upgrade/">www.highways.gov.uk/trans-pennine-upgrade/</a> or in writing to the following address: Freepost TRANS-PENNINE UPGRADE PROGRAMME



<b>Media</b>	The public consultation will be advertised in at least one national or local newspaper.
<b>Social media</b>	The public consultation will be advertised on Highways England's North West Twitter feed @highwaysNWEST

### Documents available for inspection

The public consultation brochure, this SoCC, and other relevant technical documents listed in Appendix 3 will be available online and will be added to throughout the course of the project at [www.highways.gov.uk/trans-pennine-upgrade/](http://www.highways.gov.uk/trans-pennine-upgrade/) and will be available to view, free of charge during the consultation, at the deposit locations listed below:

<b>Deposit Locations</b>	<b>Opening times</b>
<ul style="list-style-type: none"> <li>Hattersley Hub</li> </ul>	Monday, Tuesday and Saturday 09:00-17:00 Thursday: 13:00-17:00
<ul style="list-style-type: none"> <li>Gamesley Community and Sports Centre</li> </ul>	Monday to Friday 09:00-17:00
<ul style="list-style-type: none"> <li>Broadbottom Community Centre</li> </ul>	Monday to Friday 09:00-16:00 (Term Time)
<ul style="list-style-type: none"> <li>Magdalene Centre, Broadbottom</li> </ul>	Monday to Friday 09:00-16:00 (Term Time)
<ul style="list-style-type: none"> <li>Penistone Library</li> </ul>	Monday 09:00-16:00 Tuesday 09:00-17:00 Wednesday 09:00-12:00 Thursday 09:00-19:00 Friday 09:00-17:00 Saturday 09:30-12:00
<ul style="list-style-type: none"> <li>Stocksbridge Library</li> </ul>	Monday and Tuesday 10:00-17:30 Thursday: 12:30-18:30 Friday: 10:00-14:00 Saturday: 10:00-16:00
<ul style="list-style-type: none"> <li>Barnsley Central Library</li> </ul>	Monday and Wednesday 09:30-19:00 Tuesday, Thursday and Friday 09:30-17:30 Saturday 09:30-16:00
<ul style="list-style-type: none"> <li>Mottram Post Office</li> </ul>	Monday Friday 09:00-17:30 Saturday 09:00-12:30
<ul style="list-style-type: none"> <li>Hollingworth Post Office</li> </ul>	Monday to Sunday 05:30-21:00
<ul style="list-style-type: none"> <li>Hadfield Library</li> </ul>	Tuesday 14:00-19:00 Thursday 10:00-13:00 and 14:00-17:00 Friday 14:00-17:00 Saturday 09:30-13:00
<ul style="list-style-type: none"> <li>St Mary's Church, Hollingworth</li> </ul>	Open for events, usually every day

<ul style="list-style-type: none"> <li>• Tankersley Welfare Hall</li> </ul>	Open for events usually every day
<ul style="list-style-type: none"> <li>• Tankersley Post Office</li> </ul>	Monday – Friday 09:00-17:30 Saturday 09:00-12:30
<ul style="list-style-type: none"> <li>• Hattersley Library</li> </ul>	Monday and Tuesday 09:00-17:00 Thursday: 13:00-17:00 Saturday: 09:00-13:00
<ul style="list-style-type: none"> <li>• Glossop Library</li> </ul>	Monday and Wednesday 14:00-17:30 Thursday 10:00-13:00 and 14:00-19:00 Saturday 09.30-13:00
<ul style="list-style-type: none"> <li>• Glossop Leisure Centre</li> </ul>	Monday to Thursday 06:30-22:30 Friday 06:30-21:30 Saturday and Sunday 09:00-19:00
<ul style="list-style-type: none"> <li>• Bradbury Community House</li> </ul>	Open for events Monday to Saturday
<ul style="list-style-type: none"> <li>• Peak District National Park Authority</li> </ul>	Centres open every day

## Next steps

Comments made during the public consultation will be recorded and carefully considered by Highways England and will be taken into account in developing the scheme proposal further. An explanation of how comments received have shaped and influenced our proposals including feedback received at previous consultation events, will be reported in a Consultation Report prepared by Highways England which will accompany the DCO application as required by Section 37(3) (c) of the Planning Act 2008. The Planning Inspectorate will decide whether the application meets the required standards to proceed to examination, and will determine whether Highways England's pre-application consultation has been adequate.

Highways England needs to collect and assess all responses to consultation before compiling the DCO application to the Planning Inspectorate. To allow time to do this, we must receive feedback by 23:59 on the 25 March 2018.

If you want to contact us or find out more about this scheme, you can:

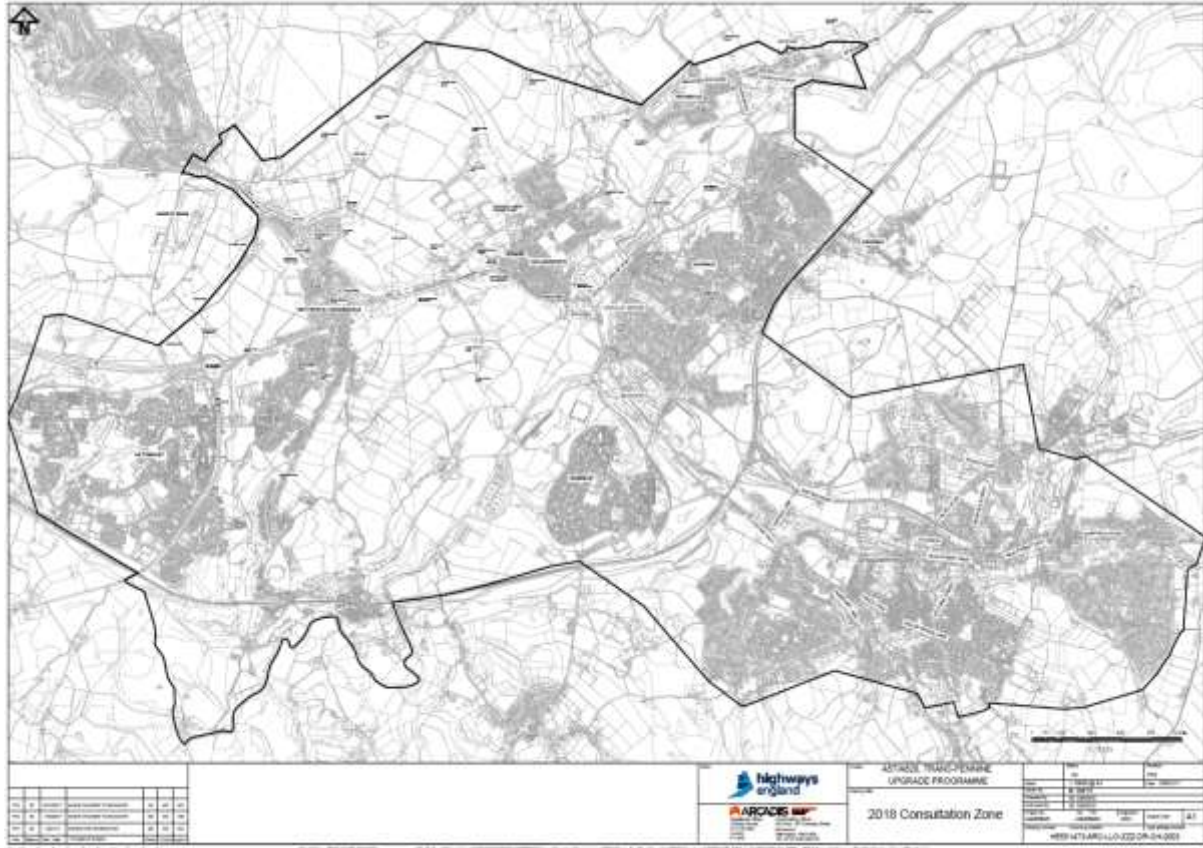
- Visit the scheme webpage: [www.highways.gov.uk/trans-pennine-upgrade/](http://www.highways.gov.uk/trans-pennine-upgrade/)
- E-mail us: [Trans\\_Pennine\\_Scheme@highwaysengland.co.uk](mailto:Trans_Pennine_Scheme@highwaysengland.co.uk)
- Call us: 0300 470 5103 (during working hours Mon-Fri 9am - 5pm)
- Write to us: Freepost TRANS-PENNINE UPGRADE PROGRAMME
- Visit the appropriate local authority website:
  - Barnsley MBC [www.barnsley.gov.uk](http://www.barnsley.gov.uk)
  - Derbyshire County Council [www.derbyshire.gov.uk](http://www.derbyshire.gov.uk)
  - High Peak Borough Council [www.highpeak.gov.uk](http://www.highpeak.gov.uk)
  - Sheffield City Council [www.sheffield.gov.uk](http://www.sheffield.gov.uk)
  - Tameside MBC [www.tameside.gov.uk](http://www.tameside.gov.uk)

Date: 24 November 2017

## Appendices

### Appendix 1 – Consultation zone

The consultation hopes to attract residents, organisations and businesses from surrounding the proposed route.



### Appendix 2 – Local Authorities

Host Local Authorities affected by the scheme:

Derbyshire County Council  
High Peak Borough Council  
Tameside MBC

Neighbouring Local Authorities:

Barnsley MBC  
Kirklees MBC  
Rotherham MBC  
Sheffield City Council

And Transport for Greater Manchester

---

**Appendix 3 - Documents to be made available for inspection at inspection locations listed:**

Map of route  
Public consultation brochure (including questionnaire response form)  
SoCC  
Notice of application  
Public Consultation report  
DCO Leaflet